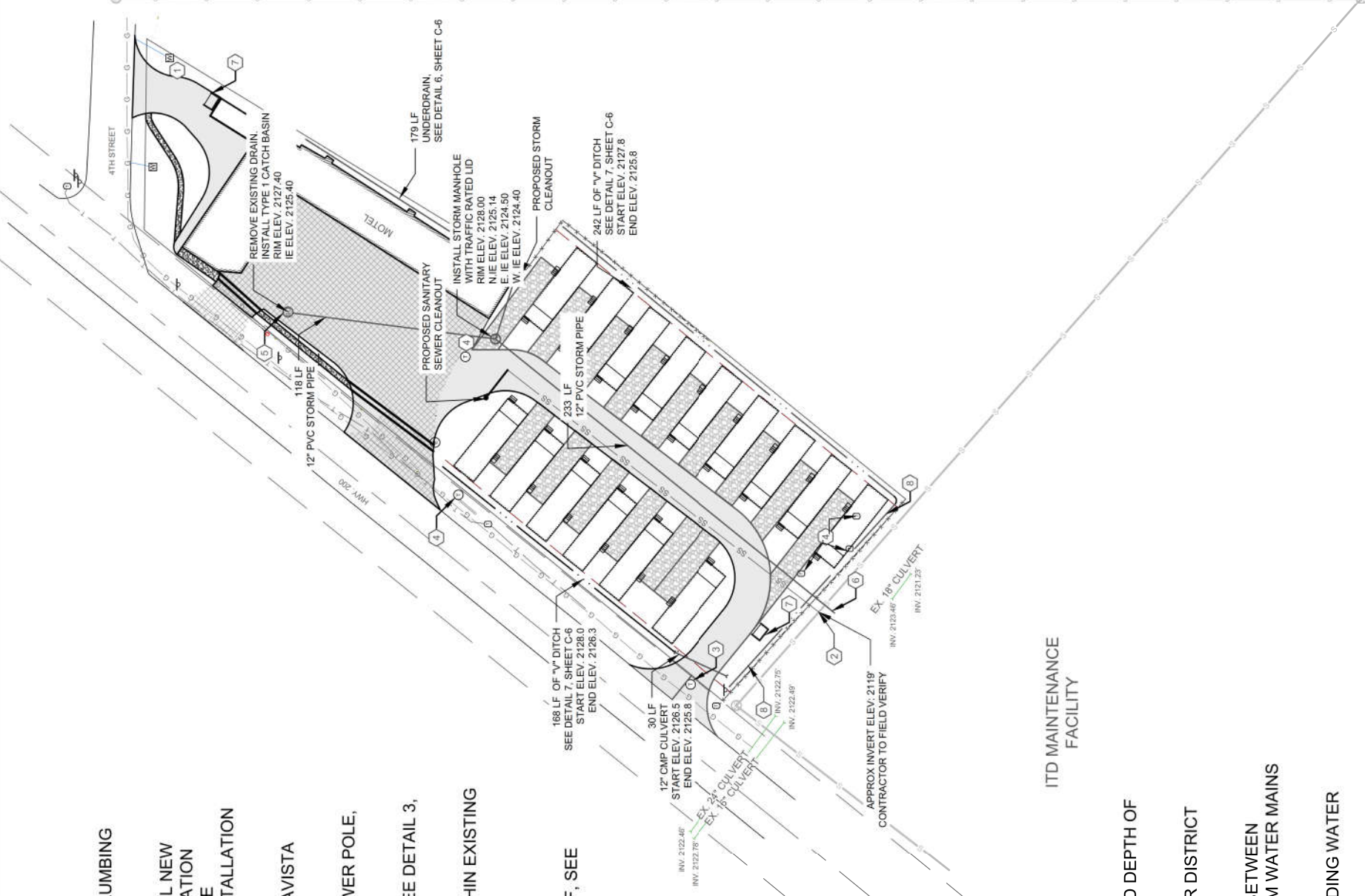


KEY NOTES:

- ① CONNECT AT EXISTING WATER METER AND INSTALL NEW 2" WATER SERVICE LINE TO THE TRAILERS PER THE UNIFORM PLUMBING CODE FOR INSTALLATION AND SEPARATION REQUIREMENTS.
- ② CONNECT TO EXISTING 8" SANITARY SEWER MAIN AND INSTALL NEW 6" GRAVITY SEWER SERVICE AT MINIMUM SLOPE AT THE LOCATION SHOWN. EACH TRAILER TO BE CONNECTED WITH A 4" SERVICE AND CLEAN OUT PER THE UNIFORM PLUMBING CODE FOR INSTALLATION AND SEPARATION REQUIREMENTS.
- ③ EXISTING POWER POLE TO BE REMOVED BY UTILITY OWNER, AVISTA UTILITIES.
- ④ CONTRACTOR SHALL CUT OFF AND REMOVE ABANDONED POWER POLE, TELEPHONE PEDESTALS AND ASSOCIATED WIRES.
- ⑤ INSTALL TYPE 1 CATCH BASIN WITH A TRAFFIC LOADED LID, SEE DETAIL 3, SHEET C-6.
- ⑥ OUTFALL FOR STORM DRAIN TO BE EXTENDED TO CATCH WITHIN EXISTING DRAINAGE. APPROXIMATE INVERT ELEV = 2123.9.
- ⑦ FENCED TRASH RECEPTACLE.
- ⑧ INSTALL 2 SECTIONS OF OVERFLOW "V" DITCH, 85 LF AND 34 LF, SEE DETAIL 8, SHEET C-6. GRADE OUTFALL TO DRAIN.

NOTES:

1. CONTRACTOR SHALL VERIFY THE LOCATION, ELEVATION, AND DEPTH OF EXISTING SANITARY SEWER.
2. CONTRACTOR SHALL CONTACT KOOTENAI PONDERAY SEWER DISTRICT BEFORE CONNECTING TO LIVE SEWER.
3. CONTRACTOR SHALL MAINTAIN A MINIMUM 10' SEPARATION BETWEEN SANITARY SEWER STRUCTURES, MAINS, AND SERVICES FROM WATER MAINS AND SERVICES.
4. CONTRACTOR TO CONTACT THE CITY OF SANDPOINT REGARDING WATER SERVICE.
5. ALL WORK SHALL BE PERFORMED IN ACCORDANCE WITH IDAHO STANDARDS FOR PUBLIC WORKS CONSTRUCTION, LATEST EDITION.



LEGEND

- EXISTING SANITARY SEWER MAIN
- SS— PROPOSED SANITARY SEWER SERVICE
- ...— PROPOSED FRENCH DRAIN
- — PROPOSED STORM MAIN
- EXISTING SANITARY SEWER MANHOLE
- PROPOSED STORM MANHOLE



PROJ. NO.	CW146	REVISION	
DMV. BY	DMV. BY	DATE	DATE
BY: C-3	BY:	4 OF 7	09/2019
DATE:	DATE:		

S & W MOTEL  
UTILITY PLAN

CLEARWATER ENGINEERING  
PLANNING, DESIGN, CONSTRUCTION MGMT.  
P.O. BOX 251, SANDPOINT, IDAHO 83864  
(208) 255-8803

SCALE VERIFICATION:  
THESE PRINTS MAY BE REDUCED.  
LINE BELOW MEASURES ONE INCH  
ON ORIGINAL DRAWING.



ITD MAINTENANCE FACILITY